



## WAAREE SOLAR TUBULAR BATTERY - APPLICATIONS



Solar Power Plants



Roof-top Solar Power Pack



Street Lighting



Railway Signalling



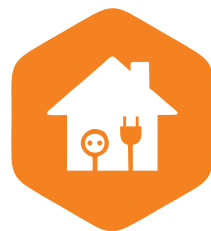
Telecommunication Power Supply



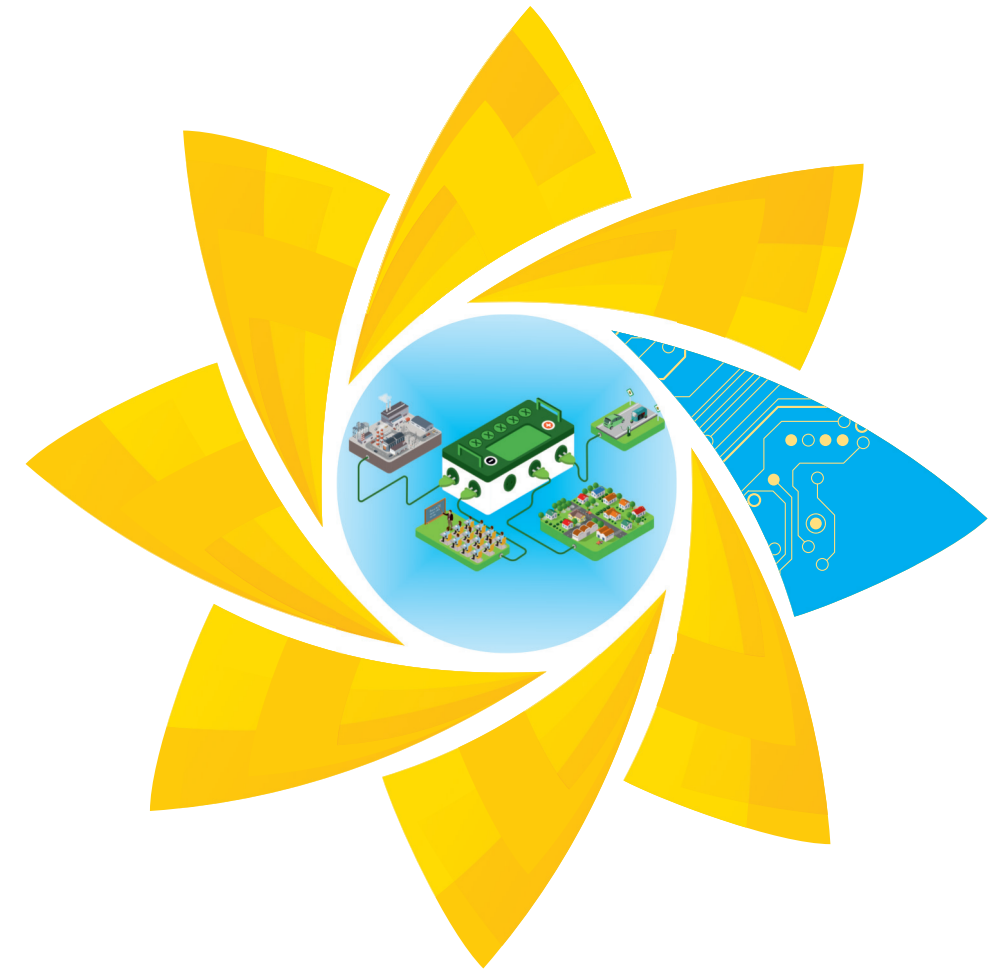
Offshore Platform Power Supply



Rural Electrification



Home Lighting



## SOLAR TUBULAR BATTERY

### WAAREE ENERGIES LTD.

602, Western Edge-1, Off Western Express Highway, Borivali (E), Mumbai-400066. Maharashtra. India  
 Tel : +91-22-6644 4444 • Toll free: 1800-2121-321  
 Email: waaree@waaree.com • Website: www.waaree.com

Disclaimer:

\*Waaree Energies Limited shall not be held responsible or liable for any unauthorized or undue alteration, modification, improvisation, change in data, contents, representation on collateral/brochure/datasheet of Waaree Energies Limited.

\* Images of product on collaterals/brochures/datasheet of Waaree Energies Limited are for representative purpose only and actual product may differ from the images depicted.

# NO.1

## VERTICALLY INTEGRATED COMPANY WITH GLOBAL OPERATIONS

### INDIAN SOLAR PANEL MANUFACTURER

29+ YEARS

INDUSTRY EXPERIENCE

600+ MW

EPC PROJECTS COMMISSIONED

2 GW

MODULES SUPPLIED GLOBALLY

5,000+ PROJECTS

IN PUMPS, TELECOM AND ROOFTOP

68+ COUNTRIES

SERVICES THROUGH 280 SALES OFFICES ACROSS THE GLOBE

1.5 GW

MODULE MANUFACTURING CAPACITY



### WAAREE SOLAR TUBULAR BATTERY - FEATURES

- Rugged tubular positive plate construction with PDC grid spine for long life
- Superior cycle life under deep cycle duty
- Ultra low maintenance
- Very low self discharge rate under storage
- Suitable for frequent cyclic duty under PSOC condition
- Superior Ampere-hour and Watt-hour efficiency
- Supplied in ready to use factory charged condition
- Meets IS-13369 & IEC 61427 specification with latest amendments

### TECHNICAL SPECIFICATIONS

Model	Nominal Voltage (V)	Nominal Capacity-C10 (Ah @ 27°C) 10 hr (10.8 V)	Overall Dimensions (in mm)			Battery Weight (Kg) ± 5%	Warranty (months)	Terminal Type
			Length ±5mm	Width ±5mm	Height ± 5mm			
12WT040S	12	40	410	172	245	22.5	36	M8 L-Terminal
12WT040SL	12	40	410	172	245	23.0	60	M8 L-Terminal
12WT060S	12	60	410	172	245	26.0	36	M8 L-Terminal
12WT060SL	12	60	410	172	245	27.0	60	M8 L-Terminal
12WT075S	12	75	508	212	286	39.0	36	M8 L-Terminal
12WT075SL	12	75	508	212	286	40.0	60	M8 L-Terminal
12WT100S	12	100	508	212	286	42.5	36	M8 L-Terminal
12WT100SL	12	100	508	212	286	44.0	60	M8 L-Terminal
12WT120S	12	120	505	190	410	54.5	36	M8 L-Terminal
12WT120SL	12	120	505	190	410	56.0	60	M8 L-Terminal
12WT150S	12	150	505	190	410	59.0	36	M8 L-Terminal
12WT150SL	12	150	505	190	410	61.0	60	M8 L-Terminal
12WT200S	12	200	505	190	410	66.0	36	M8 L-Terminal
12WT200SL	12	200	505	190	410	68.5	60	M8 L-Terminal

### CHARACTERISTICS

Charging Current	Minimum 10% to Maximum 20% of the Battery Nominal Capacity
Float Voltage*	13.8 ± 0.1 Volt
Boost Voltage*	15.6 ± 0.1 Volt
Low Voltage Cut-off	11.4 ± 0.1 Volt
Low Reconnect Voltage	13.0 ± 0.1 Volt
Temperature Correction Factor	Float: -18mV/°C, Boost: -30mV/°C
Recharge Factor	110% of Discharge Ah
Storage Period	3 months max.
Operating Temperature	-15 to 55°C
Compliance Standard	Generally conforms to IS-13369 Specification (latest amendments)

\*Specifications are under continuous improvement & subject to change without prior notice