



WAAREE SMF BATTERY - APPLICATIONS



Solar power systems and products



Electrical power system



Railways Signalling



Alarm and security systems



UPS and inverters



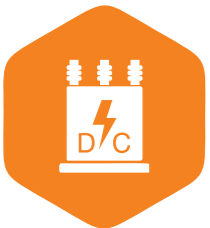
Data center



Emergency light



Telecom



DC power supply



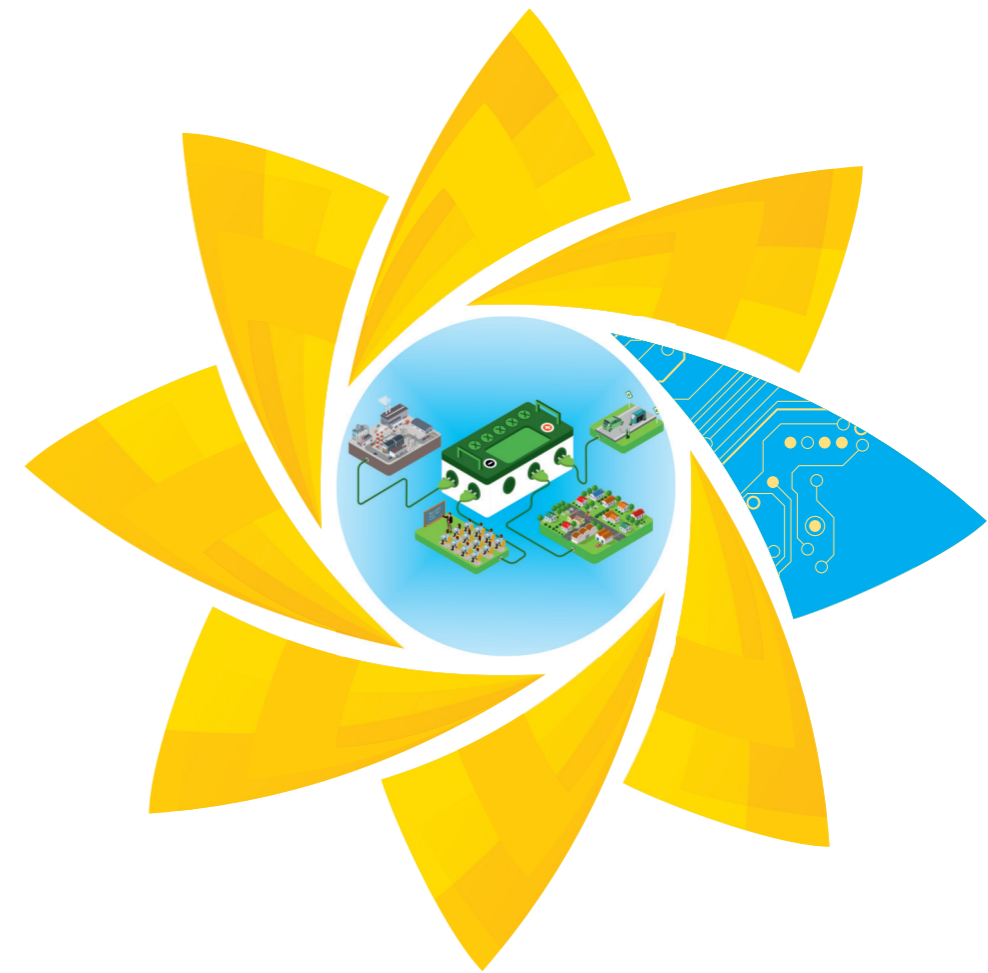
Emergency back ups



Home and office back up power



Power Tools & Toys



SEALED MAINTENANCE FREE SMF BATTERY

WAAREE ENERGIES LTD.

602, Western Edge-1, Off Western Express Highway, Borivali (E), Mumbai-400066. Maharashtra. India
 Tel : +91-22-6644 4444 • Toll free: 1800-2121-321
 Email: waaree@waaree.com • Website: www.waaree.com

Disclaimer:

*Waaree Energies Limited shall not be held responsible or liable for any unauthorized or undue alteration, modification, improvisation, change in data, contents, representation on collateral/brochure/datasheet of Waaree Energies Limited.

* Images of product on collaterals/brochures/datasheet of Waaree Energies Limited are for representative purpose only and actual product may differ from the images depicted.

NO.1

INDIAN SOLAR PANEL MANUFACTURER

VERTICALLY INTEGRATED COMPANY WITH GLOBAL OPERATIONS



29+ YEARS

INDUSTRY EXPERIENCE

600+ MW

EPC PROJECTS COMMISSIONED

2 GW

MODULES SUPPLIED GLOBALLY

5,000+ PROJECTS

IN PUMPS, TELECOM AND ROOFTOP

68+ COUNTRIES

SERVICES THROUGH 280 SALES OFFICES ACROSS THE GLOBE

1.5 GW

MODULE MANUFACTURING CAPACITY

WAAREE SMF BATTERY - FEATURES

- Sealed Maintenance Free Valve Regulated Lead Acid Battery
- Maintenance Free & Non-spillable sealed construction.
- Excellent deep discharge recovery and charge acceptance characteristics.
- Low Internal Resistance ensures quick power delivery.
- Higher Gas Recombination Efficiency ensures maintenance free operation and long service life.
- High purity raw material ensures low self-discharge and long shelf life characteristics
- Manufactured in state- of- the art facility with all major QMS certifications.
- Dedicated After -Sales Service Network and support PAN India.

TECHNICAL SPECIFICATIONS

Model	Nominal Voltage (V)	Nominal Capacity (Ah) 20hr 10.5V	Rated Capacity (Ah) 1hr 9.6V	Dimensions (mm) ±1mm				Battery Weight (Kg) ±3%	Terminal Type
				Length	Width	Height	Total Height		
12W072	12	7.2	4.8	151	65	94	100	2.1	F2
12W075	12	7.5	5	151	65	94	100	2.3	F2
12W078	12	7.8	5.2	151	65	94	100	2.5	F2

COMPLIANCE STANDARDS

JIS C 8702-1&2:2009, IS 15549:2005